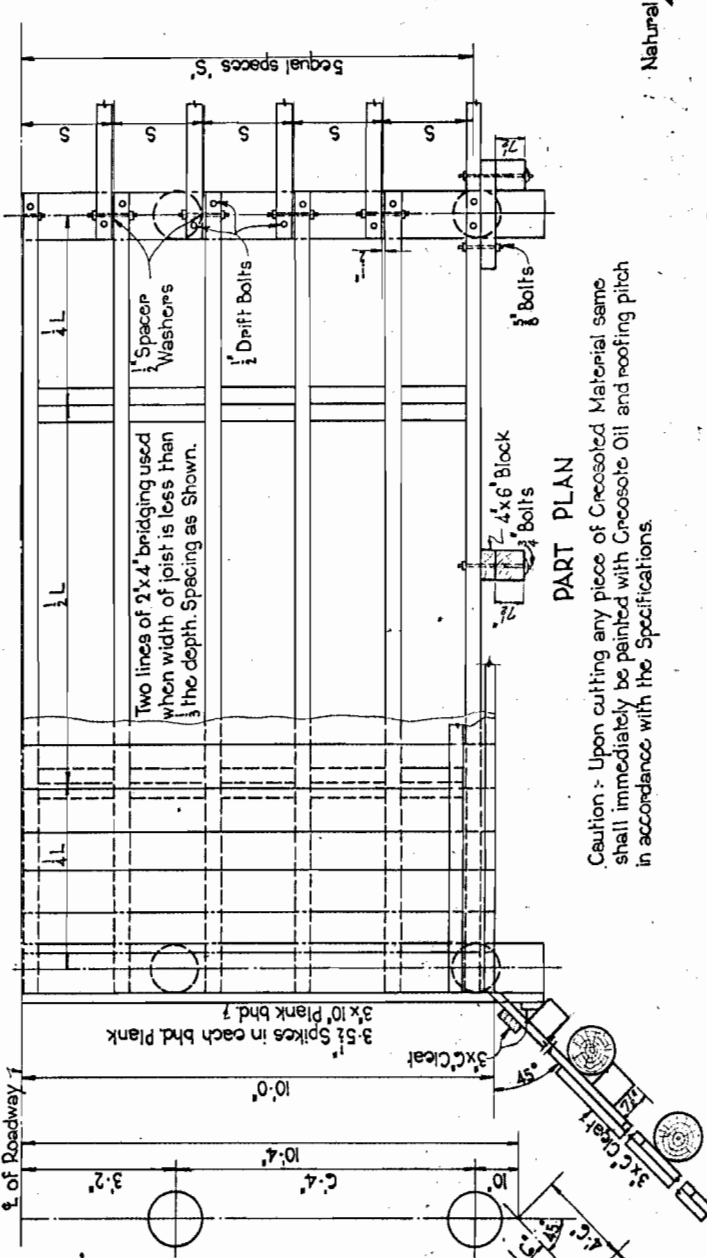


PART ELEVATION

ONE BULKHEAD INCLUDING WINGS

No. of Posts	Length of Posts (Feet)	F. B. M.	Pounds
1	1	283	20
2	2	390	20
3	3	504	20
4	4	625	20
5	5	745	25
6	6	863	25
7	7	980	30
8	8	1098	30
9	9	1332	30
10	10	1332	30
11	11	1332	30
12	12	1332	30
13	13	1332	30
14	14	1332	30
15	15	1332	30
16	16	1332	30
17	17	1332	30
18	18	1332	30
19	19	1332	30
20	20	1332	30
21	21	1332	30
22	22	1332	30
23	23	1332	30
24	24	1332	30
25	25	1332	30
Untreated Lbr. 105 F.B.M.			

Note: Joists to have full bearing on caps except outside lines which are to be butted. Lapped joists separated 1/2".



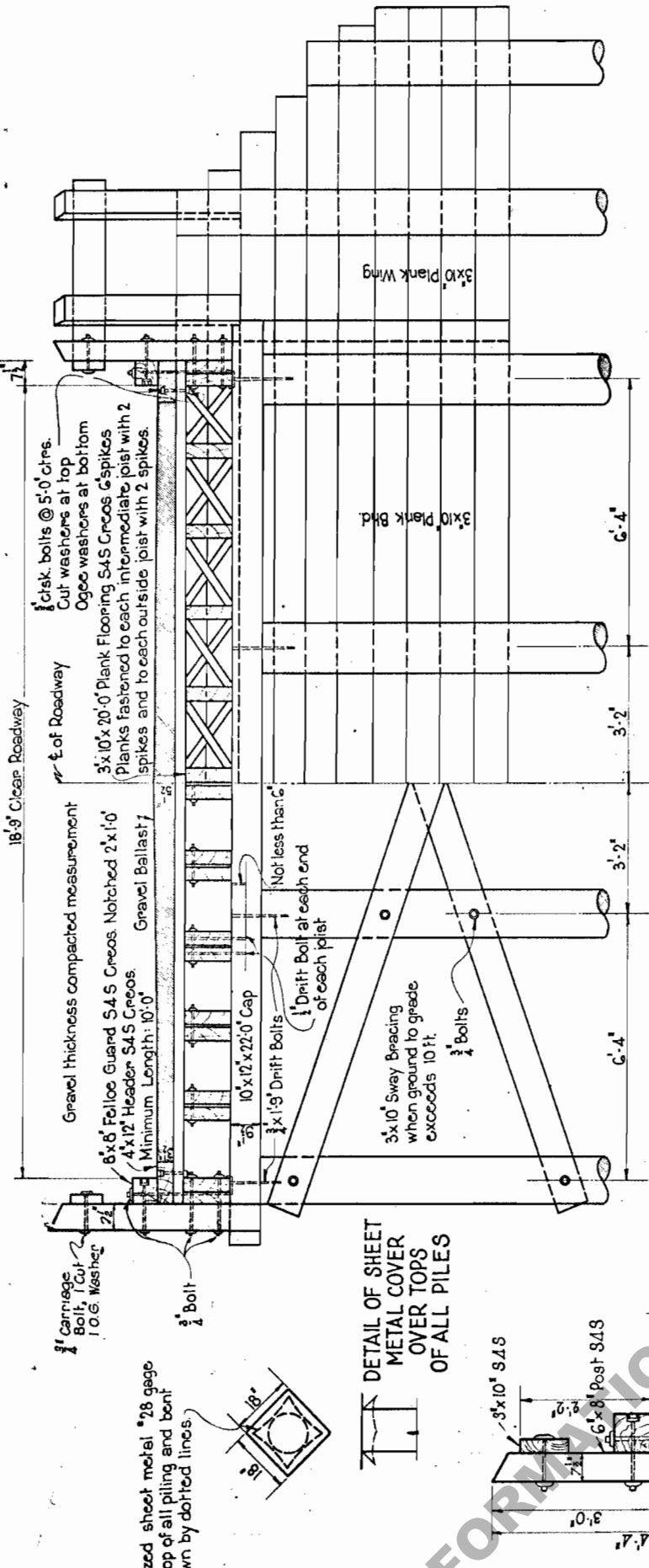
PART PLAN

Caution: Upon cutting any piece of creosoted material same shall immediately be painted with creosote oil and roofing pitch in accordance with the Specifications.

SWAY AND SASH BRACINGS

Ground to Grade	No. Sails	Length of Sails (Feet)	No. Planks	Length of Planks (Feet)	Lumber (F. B. M.)	Hardware (Pounds)
10-11	1	22	1	20	120	40
12-15	1	24	1	20	320	70
16-24	2	22	2	20	340	70
25-26	2	24	2	20	340	70

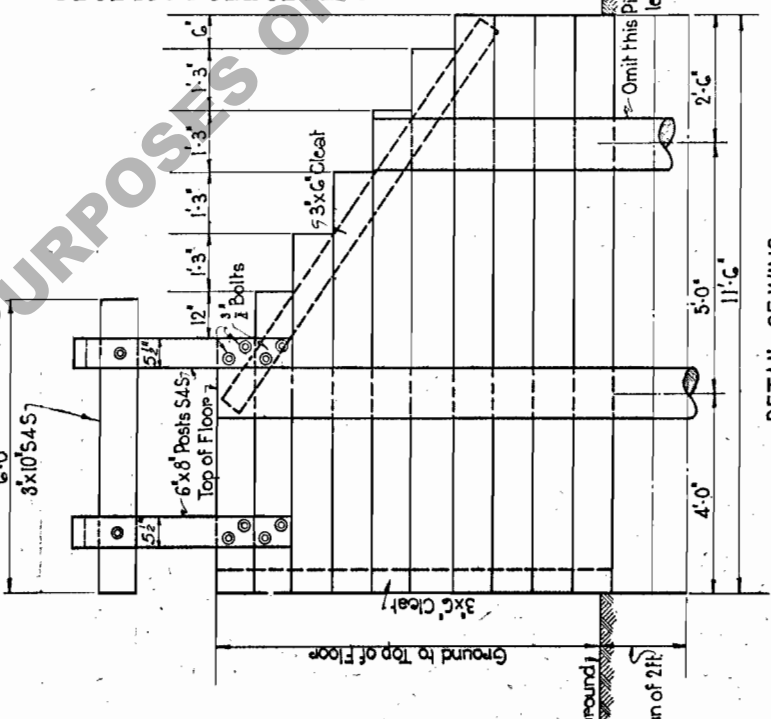
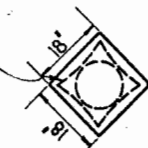
REVISION	DESCRIPTION	BY



HALF SECTION A-A

HALF SECTION B-B

DETAIL OF SHEET METAL COVER OVER TOPS OF ALL PILES



DETAIL OF WING
View Normal To Face

DIMENSIONS AND QUANTITIES FOR SUPERSTRUCTURE

Panel Length Feet	One Panel Complete			Additional Panel			Hand-ware Pounds
	Joists Inches	Lumber F. B. M.	Gravel Ballast Cu. Yds.	Joists Inches	Lumber F. B. M.	Gravel Ballast Cu. Yds.	
11	4x12	164	327	130	1671	2.88	
13	4x14	174	2372	379	141	2074	340
15	4x14	184	2637	432	151	2339	392
17	4x14	229	3315	484	196	3017	445
19	4x14	239	3636	536	206	3324	497
21	4x16	248	4197	589	217	3894	549
23	4x16	293	4541	641	261	4243	602
25	4x16	303	4870	693	271	4581	654

10 TON CAPACITY

General Notes
Each Pile Shall have a Bearing Capacity of 10 Tons as determined by the following formulae: When drop Hammer is used, P. = 2W² / (S + 1) when Steam Hammer is used, P. = 2W² / (S + 1). S = Safe Bearing Capacity of Pile in Pounds. W = Weight of Striking part of Hammer in Pounds. H = Fall of Hammer in Feet. S = Average Penetration in inches for each of last 5 blows of Drop Hammer or last 20 blows of Steam Hammer. Piles Shall have a Minimum Penetration of 12 ft. in Firm Material and 20 ft. in soft Material. Handrail Shall be Painted with Three Coats of White Lead and Linseed Oil. Complete permeant Records of Each Structure as built should be made showing Pile Lengths, Penetrations, Pile Drawing Data, and any Modifications of this Design. Washers to be Ogee Type Cast Iron for 1/2" and 3/4" Bolts and Cut Wrought Iron for 1/2" Bolts. Handrail and Posts to be untreated. All other lumber to be creosoted.

Fasten Bulkhead Planks to Piles with G04 Wire Nails - 2 in each plank to each Pile. Pile when height of abutment is less than 3'-4".

STANDARD
TIMBER TRESTLE WITH GRAVELLED DECK
18'-9" ROADWAY
19 SPANS
LOUISIANA HIGHWAY COMMISSION
Baton Rouge, La.
June 1931
Scale: 1" = 10'

REV. SEPT. 28, 1936
REV. MAY 12, 1936
REV. MAY 4, 1936
REV. JAN. 13, 1936
REV. JUNE 14, 1938